



SAMSUNG

HW-H750

HW-H751

User manual

Wireless Audio - Soundbar

Imagine the possibilities

Thank you for purchasing this Samsung product.
To receive a more complete service, please register your product at
www.samsung.com/register

FEATURES

TV SoundConnect

TV SoundConnect lets you listen to audio from your TV on your Soundbar via a Bluetooth connection and lets you control the sound.

HDMI

HDMI transmits video and audio signals simultaneously, and provides a clearer picture.

The unit is also equipped with the ARC function which lets you listen to sound from your TV through the Soundbar via an HDMI cable. This function is only available if you connect the unit to an ARC compliant TV.

Surround Sound Expansion

The Surround Sound Expansion feature adds depth and spaciousness to your listening experience.

Surround Sound Expansion is powered by Sonic Emotion.

Wireless Subwoofer

Samsung's wireless module does away with cables running between the main unit and the subwoofer. Instead, the subwoofer connects to a compact wireless module that communicates with the main unit.

Special Sound Effects

You can select different Sound Effects - CINEMA / SPORTS / VOICE / MUSIC / STANDARD (Original Sound) - depending on the type of content you want to enjoy.

Multi-function Remote Control

You can use the supplied remote control to control various operations with the simple press of a button.

USB Host Support

You can connect and play music files from external USB storage devices such as MP3 players, USB flash memory, etc. using the Soundbar's USB HOST function.

Bluetooth Function

You can connect a Bluetooth device to the Soundbar and enjoy music with high quality stereo sound, all without wires!

NFC

Connect your NFC compatible device via Bluetooth to the Soundbar using this simple set-up procedure and play music on the device through the Soundbar. It is supported in some area's models only.

Multiroom Link

Once the Soundbar is connected to a smart device with Multiroom Link App, you can connect multiple Samsung Multiroom devices together wirelessly.

LICENSES



Manufactured under license from Dolby Laboratories. Dolby and the double-D symbol are trademarks of Dolby Laboratories.



For DTS patents, see <http://patents.dts.com>. Manufactured under license from DTS Licensing Limited. DTS, the Symbol, & DTS and the Symbol together are registered trademarks, and DTS 2.0 Channel is a trademark of DTS, Inc. © DTS, Inc. All Rights Reserved.

HDMI





The terms HDMI and HDMI High-Definition Multimedia Interface, and the HDMI Logo are trademarks or registered trademarks of HDMI Licensing LLC in the United States and other countries.

- To send inquiries and requests regarding open sources, contact Samsung via Email (oss.request@samsung.com).

SAFETY INFORMATION

SAFETY WARNINGS

TO REDUCE THE RISK OF ELECTRIC SHOCK, DO NOT REMOVE THE COVER (OR BACK).
NO USER-SERVICEABLE PARTS ARE INSIDE. REFER SERVICING TO QUALIFIED SERVICE PERSONNEL.

	CAUTION RISK OF ELECTRIC SHOCK DO NOT OPEN			This symbol indicates "dangerous voltage" inside the product that presents a risk of electric shock or personal injury.
				This symbol indicates important instructions accompanying the product.

WARNING : To reduce the risk of fire or electric shock, do not expose this appliance to rain or moisture.

CAUTION : TO PREVENT ELECTRIC SHOCK, MATCH WIDE BLADE OF PLUG TO WIDE SLOT, FULLY INSERT.

- This apparatus shall always be connected to a AC outlet with a protective grounding connection.
- To disconnect the apparatus from the mains, the plug must be pulled out from the mains socket, therefore the mains plug shall be readily operable.

CAUTION

- Do not expose this apparatus to dripping or splashing. Do not put objects filled with liquids, such as vases on the apparatus.
- To turn this apparatus off completely, you must pull the power plug out of the wall socket. Consequently, the power plug must be easily and readily accessible at all times.

Wiring the Main Power Supply Plug (UK Only)

IMPORTANT NOTICE

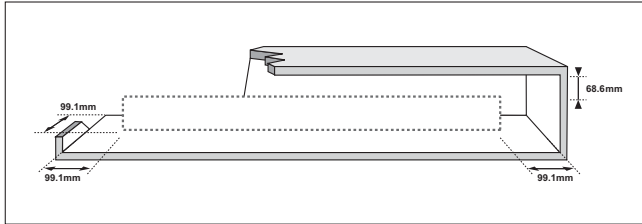
The mains lead on this equipment is supplied with a moulded plug incorporating a fuse. The value of the fuse is indicated on the pin face of the plug and if it requires replacing, a fuse approved to BS1362 of the same rating must be used. Never use the plug with the fuse cover removed. If the cover is detachable and a replacement is required, it must be of the same colour as the fuse fitted in the plug. Replacement covers are available from your dealer. If the fitted plug is not suitable for the power points in your house or the cable is not long enough to reach a power point, you should obtain a suitable safety approved extension lead or consult your dealer for assistance. However, if there is no alternative to cutting off the plug, remove the fuse and then safely dispose of the plug. Do not connect the plug to a mains socket as there is a risk of shock hazard from the bared flexible cord. Never attempt to insert bare wires directly into a mains socket. A plug and fuse must be used at all times.

IMPORTANT

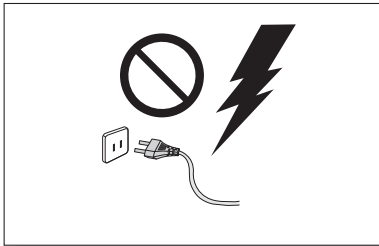
The wires in the mains lead are coloured in accordance with the following code:- BLUE = NEUTRAL BROWN = LIVE As these colours may not correspond to the coloured markings identifying the terminals in your plug, proceed as follows:- The wire coloured BLUE must be connected to the terminal marked with the letter N or coloured BLUE or BLACK. The wire coloured BROWN must be connected to the terminal marked with the letter L or coloured BROWN or RED.

WARNING : DO NOT CONNECT EITHER WIRE TO THE EARTH TERMINAL WHICH IS MARKED WITH THE LETTER E OR BY THE EARTH SYMBOL , OR COLOURED GREEN OR GREEN AND YELLOW.

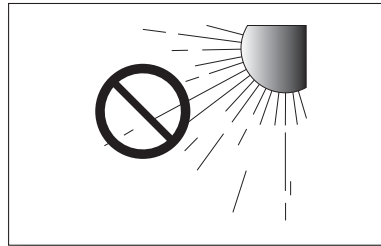
PRECAUTIONS



Ensure that the AC power supply in your house complies with the power requirements listed on the identification sticker located on the back of your product. Install your product horizontally, on a suitable base (furniture), with enough space around it for ventilation 7~10 cm. Make sure the ventilation slots are not covered. Do not place the unit on amplifiers or other equipment which may become hot. This unit is designed for continuous use. To fully turn off the unit, disconnect the AC plug from the wall outlet. Unplug the unit if you intend to leave it unused for a long period of time.

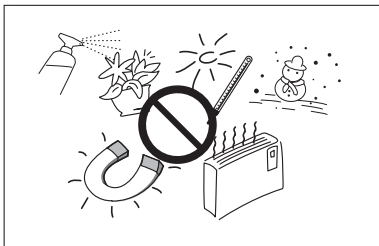


During thunderstorms, disconnect the AC plug from the wall outlet. Voltage peaks due to lightning could damage the unit.



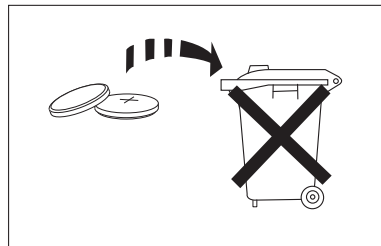
Do not expose the unit to direct sunlight or other heat sources.

This could lead to overheating and cause the unit to malfunction.



Protect the product from moisture (i.e. vases), and excess heat (e.g. a fireplace) or equipment creating strong magnetic or electric fields. Disconnect the power cable from the AC supply if the unit malfunctions. Your product is not intended for industrial use. It is for personal use only.

Condensation may occur if your product has been stored in cold temperatures. If transporting the unit during the winter, wait approximately 2 hours until the unit has reached room temperature before using.



The batteries used with this product contain chemicals that are harmful to the environment.

Do not dispose of batteries in the general household trash.

Do not dispose of batteries in a fire.

Do not short circuit, disassemble, or overheat the batteries.

Danger of explosion if battery is incorrectly replaced.

Replace only with the same or equivalent type.

CONTENTS

2 FEATURES

- 2 Licenses

3 SAFETY INFORMATION

- 3 Safety Warnings
- 4 Precautions

6 GETTING STARTED

- 6 Before reading the User's Manual
- 6 What's Included

7 DESCRIPTIONS

- 7 Front/Bottom Panel
- 8 Rear Panel

9 REMOTE CONTROL

- 9 Remote Control Buttons and Functions

11 CONNECTIONS

- 11 Installing the Wall Mount
- 12 Detaching the Wall Mount
- 13 Connecting the Wireless Subwoofer
- 14 Attaching the Toroidal Ferrite Core to the Subwoofer Power Cord and Soundbar Power Cord
- 15 Connecting an External Device using an HDMI cable
- 16 Connecting an External Device using Optical (digital) cable or Audio (analogue) cable
- 16 Assembling the Cable Clip

17 FUNCTIONS

- 17 Input Mode
- 17 ARC (HDMI OUT)
- 18 Bluetooth
- 20 NFC
- 21 TV SoundConnect
- 22 USB
- 23 Using the Network Standby On function
- 23 Using the AUTO POWER LINK Function
- 24 Using the Multiroom Link
- 26 Software update

27 TROUBLESHOOTING

28 APPENDIX



- 28 Specifications

GETTING STARTED

BEFORE READING THE USER'S MANUAL

Note the following terms before reading the user manual.

► Icons used in this manual

Icon	Term	Definition
	Caution	Indicates a situation where a function does not operate or settings may be canceled.
	Note	Indicates tips or instructions on the page that help you operate a function.

► Safety Instructions and Troubleshooting

- 1) Be sure to familiarise yourself with the Safety Instructions before using this product. (See page 3)
- 2) If a problem occurs, check Troubleshooting. (See page 27)

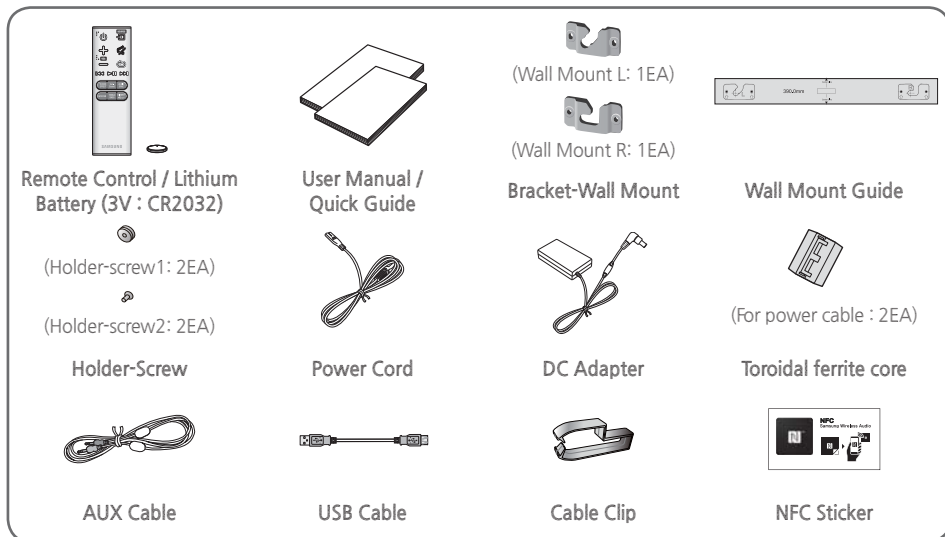
► Copyright

©2014 Samsung Electronics Co.,Ltd.

All rights reserved; no part of this user's manual may be reproduced or copied without the prior written permission of Samsung Electronics Co.,Ltd.

WHAT'S INCLUDED

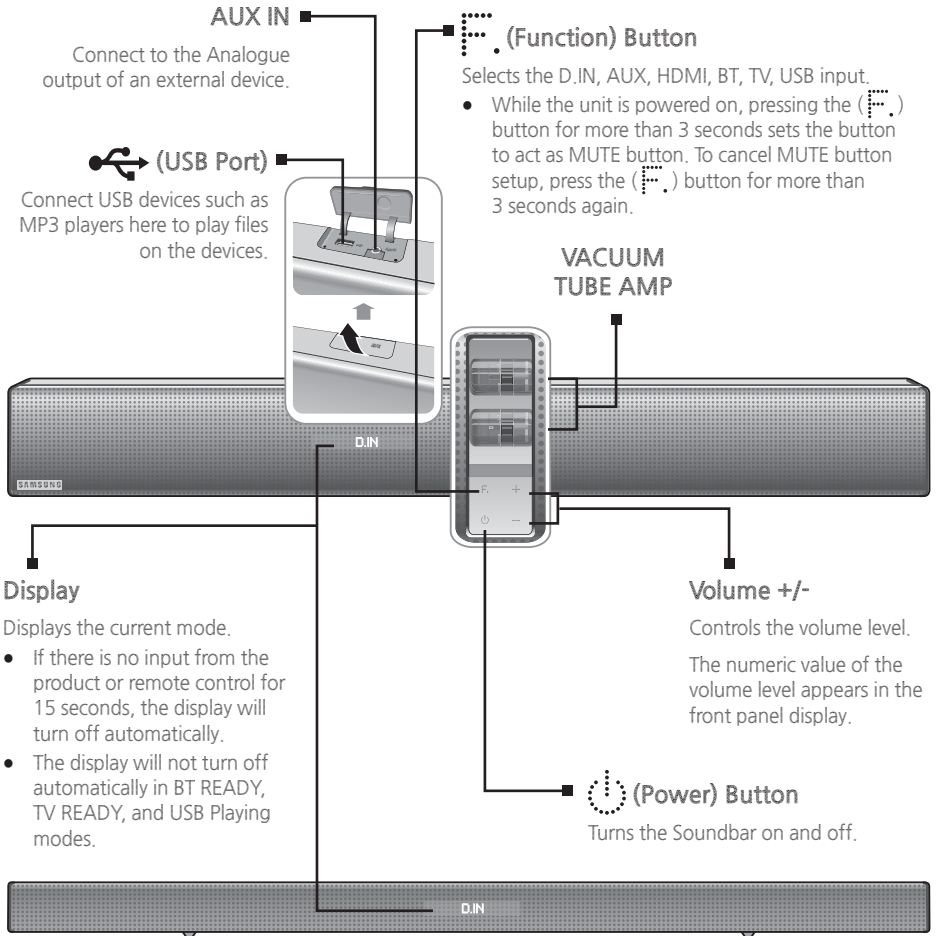
Check for the supplied accessories shown below.



- The appearance of the accessories may differ slightly from the illustrations above.
- Use the dedicated USB cable to connect external USB devices to the unit.

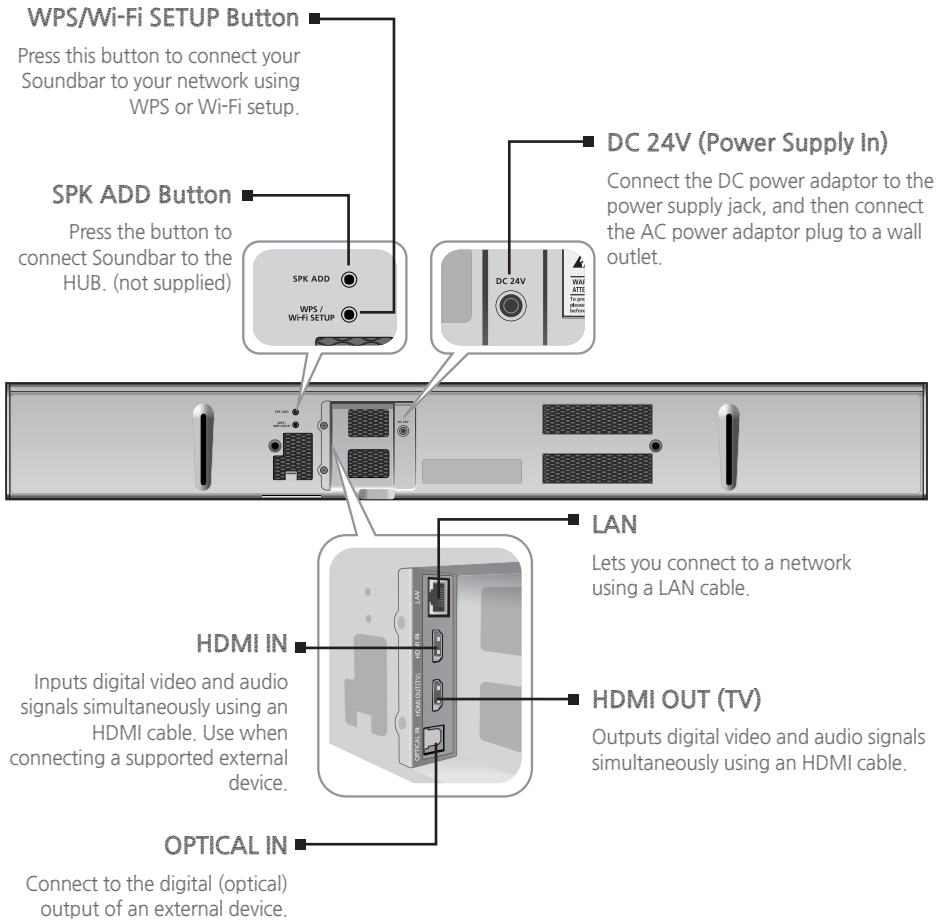
DESCRIPTIONS

FRONT/BOTTOM PANEL



- When you turn on this unit, there will be a 4 to 5 second delay before it produces sound.
- Do not bring cellular phones or mobile devices near the vacuum tube amp, or put other electronic devices on the top of the product. Signals from these devices can cause noise or distortion in the audio.
- Do not let children touch the product's surface when the set is on. It will be hot.
- Open the USB COVER to use USB or AUX port.

REAR PANEL



- When disconnecting the power cable of the AC power adaptor from the wall outlet, pull the plug. Do not pull the cable.
- Do not connect this unit or other components to an AC outlet until all connections between components are complete.

REMOTE CONTROL

REMOTE CONTROL BUTTONS AND FUNCTIONS

SOURCE
Press to select a source connected to the Soundbar.

MUTE
You can turn the volume down to 0 with the push of a button. Press again to restore the sound to the previous volume level.

REPEAT
Press to set the REPEAT function during music playback from a USB device.
REPEAT OFF : Cancels Repeat Playback.
REPEAT FILE : Repeatedly play a track.
REPEAT ALL : Repeatedly play all tracks.
REPEAT RANDOM : Plays tracks in random order.
(A track that has already been played may be played again.)

Skip Forward
If there is more than one file on the device you are playing, and you press the ►► button, the next file is selected.

AUDIO SYNC
If the Soundbar is connected to a digital TV and the video appears out of sync with the audio, press the **AUDIO SYNC** buttons to sync the audio with the video. Use the ◀◀, ▶▶ buttons to set the audio delay between 0 ms and 300 ms. In USB mode, TV mode, and BT mode, the Audio Sync function may not work.
Press and hold the **AUDIO SYNC** button on the remote for over 7 seconds to activate **Wi-Fi SETUP** function.

DIMMER/Anynet+
DIMMER : Press the **DIMMER/Anynet+** button to control the brightness of the VACUUM TUBE AMP. DIMMER does not function for 30 seconds after you turn on the product for the very first time.
Anynet+ : Press and hold the **DIMMER/Anynet+** button for more than 5 seconds to turn the Anynet+ function and AUTO POWER LINK function on or off. The Anynet+ function lets you control the Soundbar with the remote from an Anynet+ compatible Samsung TV. The Soundbar must be connected to the TV via an HDMI cable. See page 23 for details about AUTO POWER LINK.

TREBLE BASS
Press to select Treble or Bass. Then, use the ◀◀, ▶▶ button to adjust the Treble or Bass volume from -3 to +3.



- Soundbar is a Samsung proprietary name.
- Operate the TV using the TV's remote control.

POWER
Turns the Soundbar on and off.

VOLUME
Adjusts the volume level of the unit.

Skip Back
If there is more than one file on the device you are playing, and you press the **⏮** button, the previous file is selected.

Play/Pause
Press the **⏸** button to pause playing the file temporarily. Press the **▶** button again to play the selected file.

SOUND EFFECT
Press to select a sound effect mode. Select the **STANDARD** mode if you want to enjoy the original sound. When you choose a Sound Effect mode (except STANDARD), Surround Sound Expansion will automatically be turned OFF.

WOOFER
You can control the woofer volume. Press the **⏮▶** button to increase or decrease the subwoofer volume. You can set it from SW -6 to SW +6. Press and hold the **WOOFER** button on the remote for over 5 seconds to activate **SPK ADD** function.

Surr.Sound (Surround Sound Expansion)
Press the **Surr.Sound** button on the remote to add depth and spaciousness to the sound. When you select **SURROUND SOUND AUTO**: If the sound source has more than 2 channels, **SURROUND SOUND ON** turns on automatically. If the sound source has 2 channels (stereo) or less, **SURROUND SOUND OFF** is selected automatically. Press and hold the **Surr.Sound** button on the remote for over 5 seconds to activate **WPS** function.

► **Installing the Batteries in the Remote Control**

1. Use a suitable coin to turn the remote control's battery cover counterclockwise to remove it as shown in the figure above.
2. Insert a 3V lithium battery. Keep the positive (+) pole facing up when inserting the battery. Put the battery cover on and align the '●' marks by side as shown in the figure above.
3. Use a suitable coin to turn the remote control battery cover clockwise as far as it will go to fix it in place.

CONNECTIONS

INSTALLING THE WALL MOUNT

You can use the wall mount bracket to mount this unit on a wall.

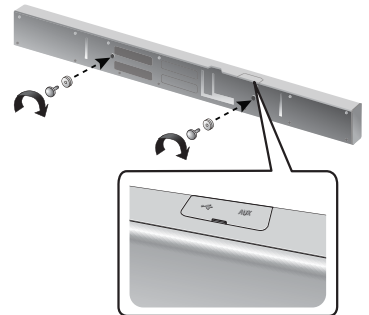
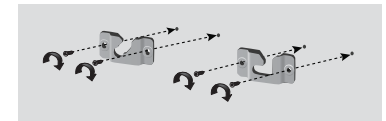
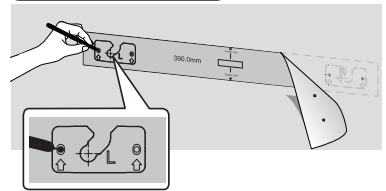
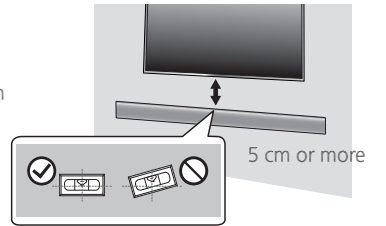
► Installation Precautions

- Install on a vertical wall only.
- For the installation, avoid a location with high temperature or humidity, or a wall that cannot sustain the weight of the set.
- Check the strength of the wall. If the wall is not strong enough to support the unit, reinforce the wall or install the unit on a different wall that can support the unit's weight.
- Purchase and use the fixing screws or anchors appropriate for the kind of wall you have (plaster board, iron board, wood, etc.).

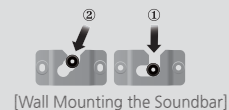
If possible, fix the support screws into wall studs.

- Purchase wall mounting screws according to the type and thickness of the wall you will mount the Soundbar on.
 - Diameter : M5
 - Length: L 35 mm or longer recommended
- Connect cables from the unit to external devices before you install it on the wall.
- Make sure the unit is turned off and unplugged before you install it. Otherwise, it may cause an electric shock.

1. Place the installation guide against the wall surface.
 - The installation guide must be level.
 - Install at least 5 cm below the TV, if the TV is mounted on the wall.
2. Mark the location where the screws will go through on the wall using a pen, and then remove the installation guide.
3. Fasten the wall mounts and screws to the marked locations.
 - The left and right mounts are different shapes.
4. Secure the two holder screws to the screw holes on the back of the Soundbar's main body, one on the left and one on the right.
5. Dust may be introduced into the Soundbar's inside if mounted on the wall. Make sure to keep the USB COVER closed.
6. Set the holder screws on the back of the Soundbar into the grooves of the wall mount. For safe installation, make sure to push the holder screws all the way to the bottom of the grooves.

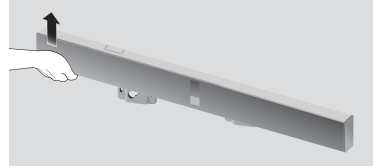


Using the Soundbar with Wall Mount

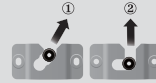


DETACHING THE WALL MOUNT

1. Pull the Soundbar upwards as shown in the figure to separate it from the wall mount.



Using the Soundbar with Wall Mount



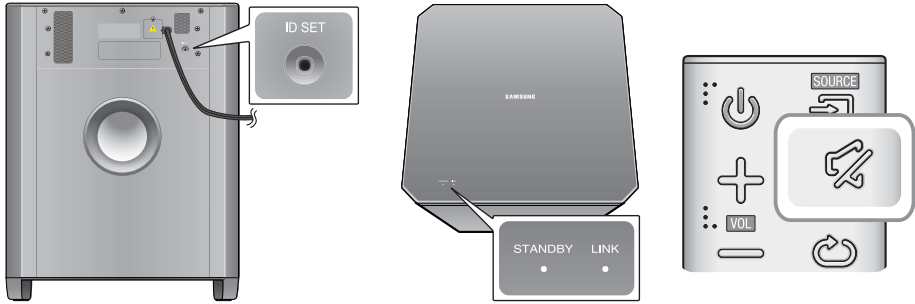
[Detaching the Soundbar from the Wall Mount]




- Do not hang onto the installed unit and avoid striking or dropping the unit.
- Secure the unit firmly to the wall so that it does not fall off. If the unit falls off, it may cause an injury or damage the product.
- When the unit is installed on a wall, please make sure that children do not pull any of the connecting cables, as it may cause it to fall.
- For the optimal performance of a wall mount installation, install the speaker system at least 5 cm below the TV, if the TV is mounted on the wall.
- For your safety, if you do not mount the unit on the wall, install it on a secure, flat surface where it is unlikely to fall.

CONNECTING THE WIRELESS SUBWOOFER

The Subwoofer's linking ID is preset at the factory and the main unit and subwoofer should link (connect wirelessly) automatically when the main unit and subwoofer are turned on. If the **LINK** indicator does not light when the main unit and subwoofer are turned on, please set the ID by following the procedure below. Complete this process within 30 seconds after the Link Indicator on the subwoofer starts blinking.



1. Plug the power cords of the main unit and subwoofer into an AC wall outlet.
2. Confirm that the main unit is off (in **STANDBY Mode**).
3. Press the **ID SET** button on the back of the subwoofer with a small, pointed object for 5 seconds.
 - The **LINK** indicator (Blue LED) on the subwoofer blinks quickly.
4. While the main unit is powered off (in **STANDBY mode**), press and hold the **MUTE** () on the remote control for 5 seconds.
5. The **ID SET** message appears on the Soundbar's display.
6. To finalise the link, turn the main unit's power on while the subwoofer's **LINK** LED blinks.
 - The main unit and the subwoofer should now be linked (connected).
 - The **LINK** indicator (blue LED) on the subwoofer should be on and solid blue.
 - If the **LINK** indicator is not solid blue, the linking process has failed. Turn off the main unit and start again from Step 2.
 - You can enjoy better sound from the wireless subwoofer by selecting a Sound Effect. (See page 10)



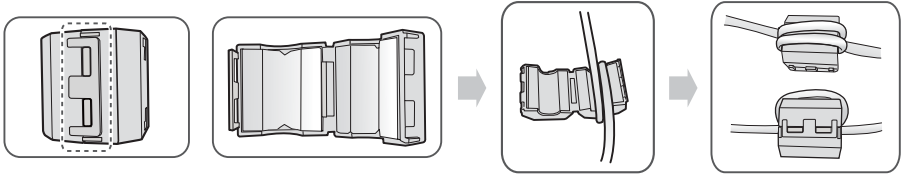
- Before moving or installing the product, be sure to turn off the power and disconnect the power cord.
- If the main unit is powered off, the wireless subwoofer will be in standby mode and the **STANDBY** LED on the upper side will come on after the **LINK** indicator (Blue LED) blinks for 30 seconds.
- If you use a device that uses the same frequency (2.4GHz) as the Soundbar near the Soundbar, interference may cause some sound interruption.
- The transmission distance of the wireless signal between the main unit and subwoofer is about 10 m, but may vary depending on your operating environment. If a steel-concrete or metallic wall is between the main unit and the wireless subwoofer, the system may not operate at all, because the wireless signal cannot penetrate metal.
- If the main unit doesn't make a wireless connection, follow steps 1-6 in the left hand column to retry the connection between the main unit and wireless subwoofer.



- The wireless receiving antenna is built into the wireless subwoofer. Keep the unit away from water and moisture.
- For optimal listening performance, make sure that the area around the wireless subwoofer location is clear of any obstructions.

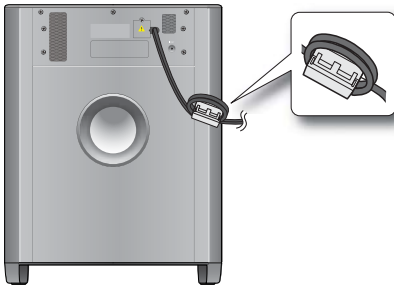
ATTACHING THE TOROIDAL FERRITE CORE TO THE SUBWOOFER POWER CORD AND SOUNDBAR POWER CORD

You can reduce noise caused by electromagnetic radiation by fitting the ferrite core to the your subwoofer power cord and Soundbar power cord.

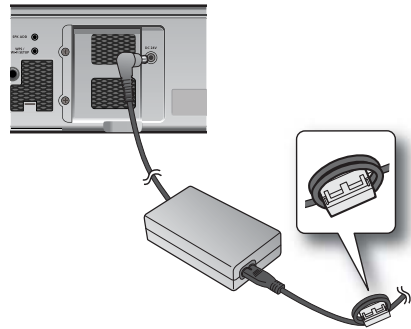


1. Unlock and open the ferrite core.
2. Wind the Subwoofer power cable and Soundbar power cable around the ferrite core twice. (Start winding 5 to 10 cm away from the core).
3. Close the ferrite core by pressing it until it clicks.

<Subwoofer Power Cable>



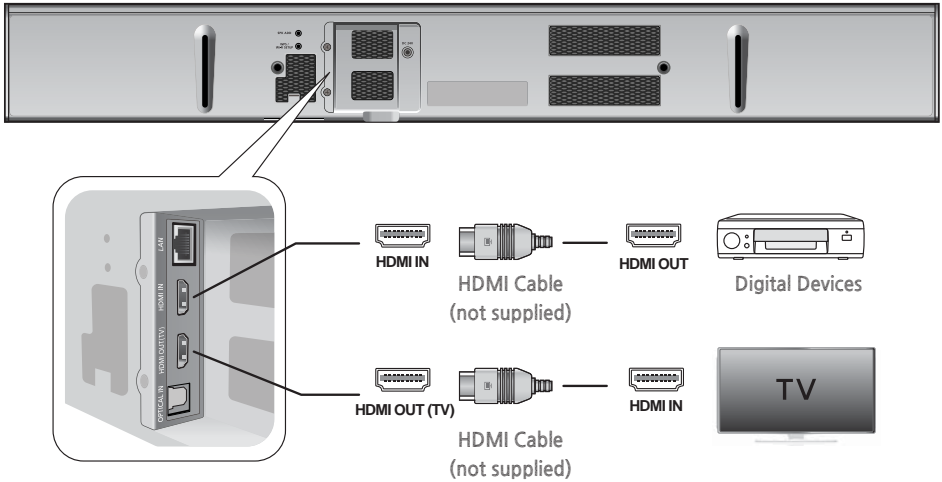
<Soundbar Power Cable>



CONNECTING AN EXTERNAL DEVICE USING AN HDMI CABLE

HDMI is the standard digital interface for connecting to such TVs, projectors, DVD players, Blu-ray players, set top boxes, and more.

Because HDMI transmits the highest quality digital signal, you can enjoy superior video and audio - as it was originally created at the digital source.



HDMI IN

Connect an HDMI cable (not supplied) from the **HDMI IN** jack on the back of the product to the HDMI OUT jack on your digital device.

and,

HDMI OUT (TV)

Connect an HDMI cable (not supplied) from the **HDMI OUT (TV)** jack on the back of the product to the HDMI IN jack on your TV.

ARC (HDMI OUT)

The ARC function allows digital audio to output via the **HDMI OUT (ARC)** port.

It can be enabled only when the Soundbar is connected to a TV that supports the ARC function.



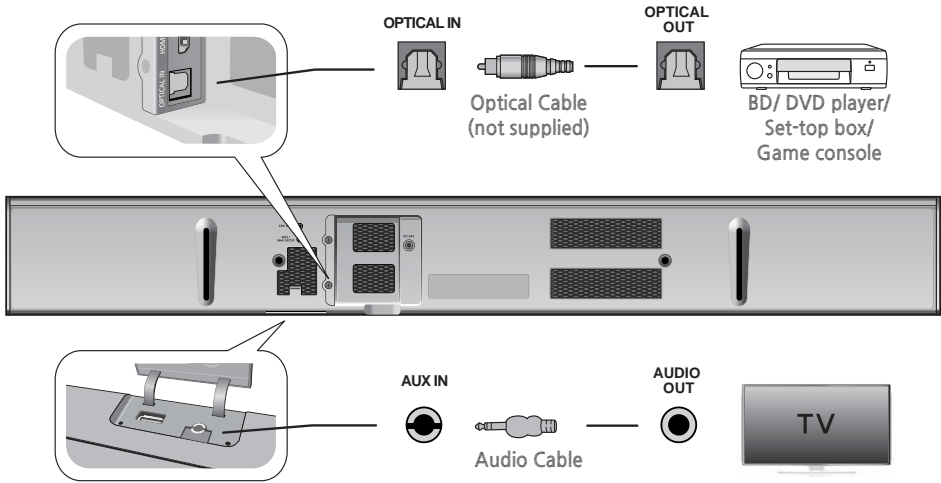
- HDMI is an interface that enables the digital transmission of video and audio data with just a single connector.



- Anynet+ must be turned on.
- This function is not available if the HDMI cable does not support ARC.

CONNECTING AN EXTERNAL DEVICE USING OPTICAL (DIGITAL) CABLE OR AUDIO (ANALOGUE) CABLE

This unit comes equipped with one optical in digital jack and one audio Analogue in jack, giving you two ways to connect it to a TV.



OPTICAL IN

Connect the **OPTICAL IN** on the main unit to the **OPTICAL OUT** jack of the TV or Source Device.



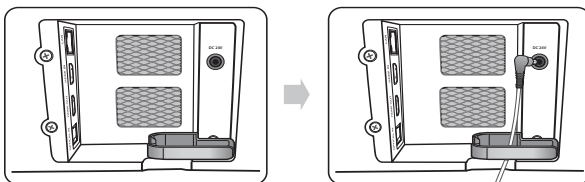
- Do not connect the power cord of this product or your TV to the wall outlet until all connections between components are complete.
- Before moving or installing this product, be sure to turn off the power and disconnect the power cord.

or,

AUX IN

Connect **AUX IN** (Audio) on the main unit to the **AUDIO OUT** jack of the TV or Source Device. Be sure to match connector colours.



ASSEMBLING THE CABLE CLIP

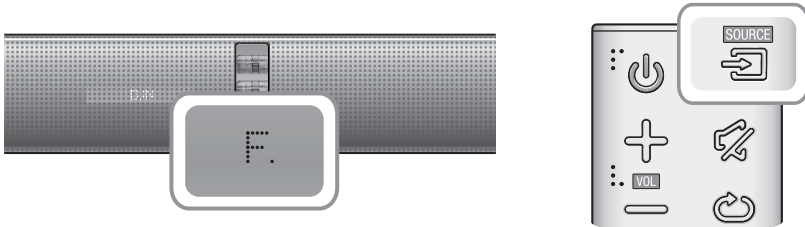


Attach the cable clip to the unit as shown, and then run the cables through the clip to keep them neat.

FUNCTIONS

INPUT MODE

Press the () button on the main unit's front panel or the  (SOURCE) button on the remote control to select the mode you want.




Input mode	Display
Optical Digital input	D.IN
AUX input	AUX
HDMI input	HDMI
BLUETOOTH mode	BT
TV mode	TV
USB mode	USB

The unit turns off automatically in the following situations:

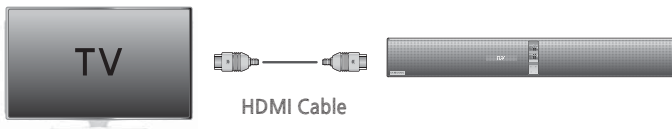
- D.IN/HDMI/BT/TV/USB/ARC Mode
 - If there is no audio signal for 15 minutes.
- AUX Mode
 - If there is no KEY input for 8 hours when the AUX cable is connected.
 - If the AUX cable is disconnected for 15 minutes.





- Use the provided USB cable if you cannot connect a USB flash memory device directly to the unit.
- To disable Auto Power down Off, press the  button for over 5 seconds in AUX mode.

ARC (HDMI OUT)

ARC (Audio Return Channel) transfers digital audio signal to the HDMI OUT (ARC) port.



1. Connect the TV supporting ARC to the Soundbar with an HDMI cable.
2. Turn on the TV, and turn on the Soundbar's Anynet+.
3. Press the () button on the main unit's front panel or the  (SOURCE) button on the remote control to select the **D.IN** mode.



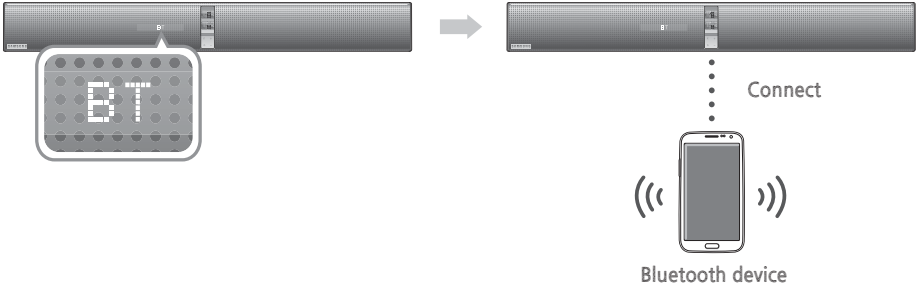
- If the HDMI cable does not support ARC feature, ARC may not work properly.
- To turn off the ARC function, turn Anynet+ off.



BLUETOOTH

You can connect a Bluetooth device to the Soundbar and enjoy music with high quality stereo sound, all without wires!

► To connect the Soundbar to a Bluetooth device

Check if the Bluetooth device supports the Bluetooth compliant stereo headset function.



1. Press the  button on the main unit's front panel or the  (SOURCE) button on the remote control to select the BT mode.
2. Select the Bluetooth menu on the Bluetooth device you want to connect. (Refer to the Bluetooth device's user manual.)
3. Select the Stereo headset menu on the Bluetooth device.
 - You will see a list of scanned devices.
4. Select "[Samsung] Soundbar" from the list.
 - When the Soundbar is connected to the Bluetooth device, it will display **BT READY** → **[Bluetooth Device Name]** → **BT** on the front display.
 - The device name can only be displayed in English. An underline " _ " will be displayed if the name is not in English.
 - If the Bluetooth device has failed to pair with the Soundbar, delete the previous "[Samsung] Soundbar" found by the Bluetooth device and have it search for the Soundbar again.
5. Play music on the connected device.
 - You can listen to the music playing on the connected Bluetooth device over the Soundbar.
 - In BT mode, the Play/Pause/Next/Prev functions are not available. However, these functions are available in Bluetooth devices supporting AVRCP.





- If asked for PIN code when connecting a Bluetooth device, enter <0000>.
- Only one Bluetooth device can be paired at a time.
- The Bluetooth connection will be terminated when you turn the Soundbar off.
- The Soundbar may not perform Bluetooth search or connection correctly under the following circumstances:
 - If there is a strong electrical field around the Soundbar.
 - If several Bluetooth devices are simultaneously paired with the Soundbar.
 - If the Bluetooth device is turned off, not in place, or malfunctions.
 - Note that such devices as microwave ovens, wireless LAN adaptors, fluorescent lights, and gas stoves use the same frequency range as the Bluetooth device, which can cause electric interference.
- The Soundbar supports SBC data (44.1kHz, 48kHz).
- Connect only to a Bluetooth device that supports the A2DP (AV) function.
- You cannot connect the Soundbar to a Bluetooth device that supports only the HF (Hands Free) function.

► To disconnect the Bluetooth device from the Soundbar

You can disconnect the Bluetooth device from the Soundbar. For instructions, see the Bluetooth device's user manual.

- The Soundbar will be disconnected.
- When the Soundbar is disconnected from the Bluetooth device, the Soundbar will display **BT DISCONNECTED** on the front display.

► To disconnect the Soundbar from the Bluetooth device

Press the  (SOURCE) button on the remote control or the () button on the product's front panel to switch from BT to another mode or turn off the Soundbar.

- The connected Bluetooth device will wait a certain amount of time for a response from the Soundbar before terminating the connection. (Disconnection time may differ, depending on the Bluetooth device)



- In Bluetooth connection mode, the Bluetooth connection will be lost if the distance between the Soundbar and the Bluetooth device exceeds 5 m.
- If the Bluetooth device comes back into the effective range after disconnecting, you can restart the Soundbar to restore the pairing with the Bluetooth device.
- The Soundbar automatically turns off after 15 minutes in the Ready state.

More About Bluetooth

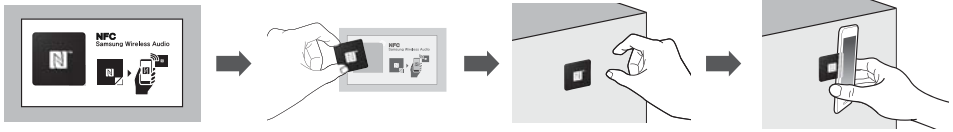
Bluetooth is a technology that enables Bluetooth-compliant devices to interconnect easily with each other using a short wireless connection.



- A Bluetooth device may cause noise or malfunction, depending on usage, when:
 - A part of your body is in contact with the receiving/transmitting system of the Bluetooth device or the Soundbar.
 - It is subject to electrical variation from obstructions caused by a wall, corner, or office partition.
 - It is exposed to electrical interference from same frequency-band devices including medical equipment, microwave ovens, and wireless LANs.
- Pair the Soundbar with the Bluetooth device while they are close together.
- The further the distance between the Soundbar and Bluetooth device, the worse the quality is. If the distance exceeds the Bluetooth operational range, the connection is lost.
- In poor reception areas, the Bluetooth connection may not work properly.
- The Bluetooth connection only works when it is close to the unit. The connection will be automatically cut off if the Bluetooth device is out of range. Even within range, the sound quality may be degraded by obstacles such as walls or doors.
- This wireless device may cause electric interference during its operation.

NFC

You can connect your Soundbar to an NFC-enabled smart device through a Bluetooth connection with a simple setup. Once connected, you can enjoy music stored in your smart device through the Soundbar. It is supported in some area's models only.

► Connecting with NFC and smart devices



1. Detach the NFC sticker label from the package and attach it to a desired spot.
 - Putting the NFC sticker within a 3m radius from the unit is recommended.
 - Do not attach the NFC sticker on a metallic surface including the Soundbar. Metallic object may interfere with communication and the NFC sticker may not work properly.
 2. Press the () button on the main unit's front panel or the  (SOURCE) button on the remote control to select the BT mode.
 3. Enable the NFC function of your smart device.
 4. Bring your smart device's NFC antenna close to the NFC label.
 5. When the connection prompt appears on your smart device's display, select <Yes>.
 - Once the connection is established, the completion message appears.
- ※ To reconnect once the initial connection had been successful, start from step 3.

► Disconnecting NFC

Bring your smart device's NFC antenna close to the NFC label on the Soundbar again. The disconnection message appears on the smart device's display.

► To connect another smart device to the Soundbar which is already connected to another NFC compatible device

After disconnecting from the previously connected device, bring the new smart device close to the NFC label of the Soundbar.

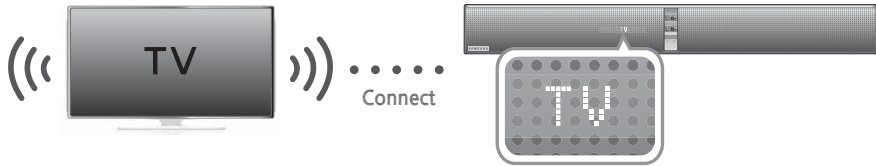


- The NFC function is implemented in Android v4.1.2 Jelly Bean and later operating systems.
 - To make NFC connections, your smart device needs both Android OS 4.1.2 Jelly Bean or later and the NFC tag for NFC function execution. You also need to download the "Samsung NFC Connection" application from the Google Play store and install it on your smart device. For further details, please refer to the smart device's user manual.
- The location of the NFC antenna is different in different devices. Confirm the location of your smart device's antenna in the device's user manual before attempting to pair it with the Soundbar.
- If your smart device is in a thick housing or case, the NFC connection may not be stable.
- The N-mark is a trade mark or registered trade mark of the NFC Forum Inc. in the United States and other countries.
- If you have trouble with an NFC connection
 - Actually touching your smart device to the NFC label can cause NFC connection failure.
 - If the "Empty tag" error is displayed on the smart device, please try again.
 - Check whether your smart device's antenna is close enough to the NFC logo on the Soundbar.
- If you turn off the Soundbar when the Network Standby On feature is ON, and then try to connect a Bluetooth device that has been previously connected using NFC, the Soundbar will turn on automatically when the device connects. To set the Network Standby On feature, see page 23.

TV SOUNDCONNECT


You can enjoy TV sound through your Soundbar when it is connected to a Samsung TV that supports the TV SoundConnect function.

► Connecting a TV to the Soundbar



1. Turn on the TV and Soundbar.


- Set the "Add New Device" menu of the TV to "On".

2. Press the (,) button on the main unit's front panel or the  (SOURCE) button on the remote control to select the TV mode.

3. On the TV, a message asking whether to enable the TV SoundConnect function. "[Samsung] Soundbar" is displayed on the TV screen.

4. Select <Yes> to finish connecting the TV and Soundbar by TV remote control.



- Switching the Soundbar's mode from TV to another mode automatically terminates TV SoundConnect.
- To connect the Soundbar to another TV, the existing connection must be terminated.
- Terminate the connection to the existing TV, and then press the  button on the remote control for 5 seconds to connect to another TV.

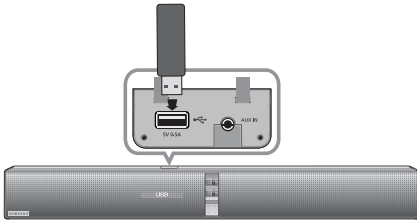


- The TV SoundConnect (SoundShare) function is supported by some Samsung TVs released from 2012 on. Check whether your TV supports the TV SoundConnect (SoundShare) function before you begin.
(For further information, refer to the TV's user manual.)
- If your Samsung TV was released before 2014, check the SoundShare setting menu.
- If the distance between the TV and Soundbar exceeds 5 m, the connection may not be stable or the audio may stutter. If this occurs, relocate the TV or Soundbar so that they are within operational range, and then re-establish the TV SoundConnect connection.
- TV SoundConnect Operational Ranges:
 - Recommended pairing range: within 50 cm
 - Recommended operational range: within 5 m
- The **Play/Pause**, **Next**, **Prev** buttons are not operable in TV SoundConnect mode.

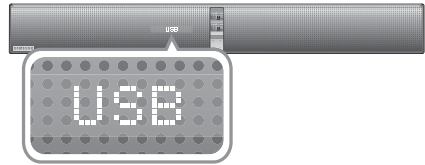
USB



You can play music files located on USB storage devices through the Soundbar.

USB port



Display



1. Connect the USB device to the USB port of the product.
2. Press the  button on the main unit's front panel or the  (SOURCE) button on the remote control to select the **USB** mode.
3. **USB** appears on the display screen.
 - The Soundbar connection to the USB device is complete.
 - The Soundbar automatically turns off (Auto Power Off) if no USB device has been connected for more than 15 minutes.

- Do not remove the USB device while it is transferring files.
- DRM-protected music files (MP3, WMA) from commercial web sites cannot be played.
- External HDDs are not supported.
- Mobile phone devices are not supported.
- File Format Type Compatibility list:

► Before you connect a USB device

Be aware of the following:

- If the file name of a folder on a USB device exceeds 10 characters, it is not displayed on the Soundbar's display.
- This product may not be compatible with certain types of USB storage media.
- The Soundbar supports the FAT16 and FAT32 file systems.
 - The NTFS file system is not supported.
- Connect USB devices directly to the USB port of the product. Otherwise, you may encounter a USB compatibility problem.
- Do not connect multiple storage devices to the product via a multi-card reader. It may not operate properly.
- Digital camera PTP protocols are not supported.

Format	Codec
*.mp3	MPEG 1 Layer2
	MPEG 1 Layer3
	MPEG 2 Layer3
	MPEG 2.5 Layer3
*.wma	Wave_Format_MSAudio1
	Wave_Format_MSAudio2
*.aac	AAC
	AAC-LC
	HE-AAC
*.wav	-
*.ogg	OGG 1.1.0
*.flac	FLAC 1.1.0, FLAC 1.2.1

※ Supported Sampling Rate above 16KHz

USING THE NETWORK STANDBY ON FUNCTION

The Network Standby On function becomes available if wireless connection was properly established between the smart device and Soundbar. This function turns on the Soundbar automatically when a smart device attempts to connect to the Soundbar via Bluetooth or Wi-Fi. If the Soundbar was turned on via Bluetooth connection, its input mode is set to **BT** automatically. Turning on the Soundbar via Wi-Fi is available only by using the App. For further information, refer to the Web manual.

1. Connect the Smart device to your Soundbar.
2. Turn the Network Standby On function on by pressing the ►► button on the Soundbar remote for more than 5 seconds. You can turn the function off by pressing the ►► button again for more than 5 seconds.



- Available only if the Soundbar is listed among the Smart device's paired devices. (The Smart device and the Soundbar must have been previously paired at least once.)
- Soundbar will appear in the Smart device's searched devices list only when the Soundbar is displaying [BT READY] or [WiFi READY].
- In the TV SoundConnect mode, the Soundbar cannot be paired to another Smart device.
- If Network Standby On function did not work
 - The Network Standby On is set to Off.
- Wi-Fi connection to the Soundbar will be terminated if its power cord was disconnected or the power was cut off. Turn on the Soundbar and reconnect.

USING THE AUTO POWER LINK FUNCTION

If Soundbar was connected to an external device with optical cable, AUTO POWER LINK function can be used. If you connect the main unit to a TV with a digital optical cable, set the Auto Power function ON to have the Soundbar turn on automatically when you turn the TV on.

1. Connect the Soundbar and an External Device with an Optical cable.
2. Press and hold the **DIMMER/Anynet+** button for over 5 seconds to toggle the function.

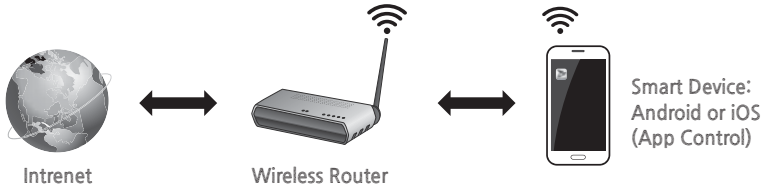
AUTO POWER LINK	Display
ON	ANYNET+ OFF / POWER LINK ON
OFF	ANYNET+ ON / POWER LINK OFF

USING THE MULTIROOM LINK

Once the Soundbar is connected to a smart device with Multiroom Link App, you can connect multiple Samsung Multiroom devices together wirelessly.

► Before you begin

Communication Basics



1. Requirements: Wireless Router, Smart Device
2. The wireless router should be connected to the Internet.
3. The smart device should be connected to the router via a Wi-Fi connection.

► Installing the Samsung Multiroom App

To use the Soundbar, you must download and then install the Samsung Multiroom App by accessing the app through Google play or the App Store. With the Samsung Multiroom App installed, you can play music stored in your smart device, from connected devices and other content providers, and from Internet radio stations.

Android or iOS

Download the Samsung Multiroom app from Google Play or the App Store of your smart device.

* Market search : Samsung Multiroom

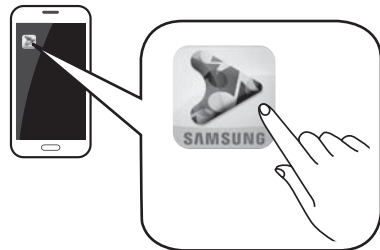


or



Accessing the Samsung Multiroom App

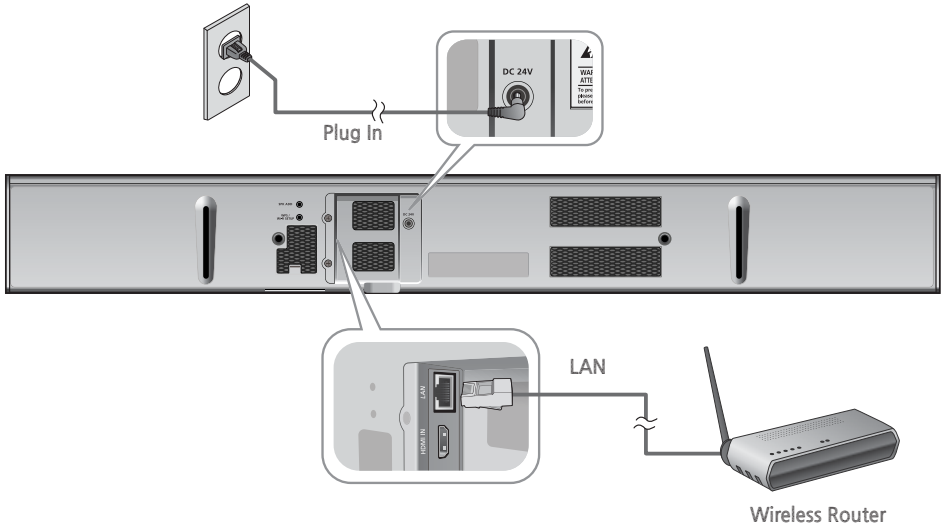
To access the Samsung Multiroom app, press the Multiroom app icon on your smart device.



► Connecting with Soundbar

Connect the Soundbar to a wired/wireless router. Wired or wireless connection (using **Wi-Fi SETUP** or **WPS**, you can see the guide on Multiroom APP) to the router can be established.

Connecting the Soundbar to Your Network with a LAN Cable

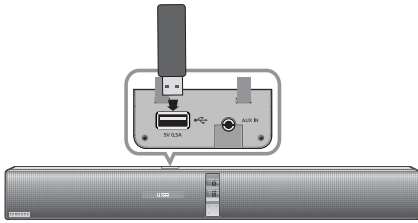


1. Connect your smart device to your Wi-Fi network.
2. On your Smart device, select the Samsung Multiroom app. Setup starts.
3. In the app, select "**I don't have a Hub**", and then press **Next**. On the next screen, select **Soundbar** from the device type, and then press **Next**.
4. Select **Wired** from the network type, and then press **Next**.
5. Connect one end of the LAN cable to the Soundbar's LAN port. Connect the other end to your wireless router. (You cannot use the Soundbar without a wireless router.)
6. Plug the Soundbar into an electrical outlet.



- For further information on connecting the Soundbar with a wired/wireless router, refer to the manual on the Web.
- For further information on connecting the product for Multiroom Link, please refer to the web-based user manual or manual provided within the app.
 - Web manual : www.Samsung.com → Support → Product name search → HW-H750 or HW-H751 PDF file download.

SOFTWARE UPDATE



► Updating with USB

Samsung may offer updates for the Soundbar's system firmware in the future.

If an update is offered, you can update the firmware by connecting a USB device with the firmware update stored on it to the USB port on your Soundbar.

Note that if there are multiple update files, you must load them onto the USB device singly and use them to update the firmware one file at a time.

Please visit Samsung.com or contact the Samsung call center to receive more information about downloading updates files.

1. While the Soundbar is turned off, connect the USB storage device that contains the updating firmware to the Soundbar's USB port.
2. Turn on the Soundbar **UPDATE** appears on the display and updating begins within 3 minutes.
 - Upon completion of updating, the Soundbar turns off and on automatically.
 - Once the software update is completed, turn on the product and then press and hold the (⏮) button on the remote control for more than 5 seconds. "INIT" appears on the display and the unit is powered off. The upgrade is complete.

If UPDATE was not displayed

1. Turn off the Soundbar, connect the USB storage device that contains update files to the Soundbar's USB port.
2. Disconnect the power cord, reconnect it and turn it on.



- Updating firmware may not work properly if audio files supported by the Soundbar are stored in the USB storage device.
- Do not disconnect the power or remove the USB device while updates are being applied. The main unit will turn off automatically after completing the firmware update.
- After reset, all settings are reset to their factory default settings. We recommend you write down your settings so that you can easily reset them after the update. Note that updating firmware resets subwoofer connection too. If connection to the subwoofer is not established automatically after resetting, refer to page 13. If the firmware fails to update, we recommend formatting the USB device in FAT16 and trying again.
- Do not format the USB device in the NTFS format. The Soundbar does not support the NTFS file system.
- Depending on the manufacturer, some USB devices may not be supported.

► Auto update

Even when the Soundbar is turned off, the Soundbar will automatically check latest software version and continue to update if it was connected to the Internet.



- The Soundbar is configured to run auto update by default.
- To use auto update function, the Soundbar must be connected to the Internet.
- Wi-Fi connection to the Soundbar will be terminated if its power cord was disconnected or the power was cut off. Turn on the Soundbar and reconnect.

TROUBLESHOOTING

Before requesting service, please check the following.

The unit will not turn on.

- | | |
|--|---|
| • Is the power cord plugged into the outlet? | → Connect the power plug to the outlet. |
|--|---|

A function does not work when the button is pressed.

- | | |
|---|---|
| • Is there static electricity in the air? | → Disconnect the power plug and connect it again. |
|---|---|

Sound is not produced.

- | | |
|---------------------------------|---|
| • Is the Mute function on? | → Press the Mute button to cancel the function. |
| • Is the volume set to minimum? | → Adjust the Volume. |

The remote control does not work.

- | | |
|---|-------------------------------|
| • Are the batteries drained? | → Replace with new batteries. |
| • Is the distance between the remote control and main unit too far? | → Move closer to the unit. |

The TV SoundConnect (TV pairing) failed.

- | | |
|---|--|
| • Does your TV support TV SoundConnect? | → TV SoundConnect is supported by some Samsung TVs released from 2012 on. Check your TV to see if it supports TV SoundConnect. |
| • Is your TV firmware the latest version? | → Update your TV with the latest firmware. |
| • Does an error occur when connecting? | → Contact the Samsung call centre. |
| • Reset the TV MODE and connect again. | → Press and hold the ► button for 5 seconds to reset the TV SoundConnect connection. |

The red LED on the subwoofer blinks and the subwoofer is not producing sound.

- | | |
|--|---|
| • Your subwoofer may not be connected to the main body of the product. | → Try to connect your subwoofer again.
(See Page 13) |
|--|---|

Try to connect your subwoofer again.

- | | |
|--|--|
| • Try to adjust the vibration of your subwoofer. | → Press the WOOFER button on your remote control to adjust its value (between SW-6 and SW+6). |
|--|--|

APPENDIX

SPECIFICATIONS

Model name	HW-H750, HW-H751		
GENERAL	USB		5V/0.5A
	Weight	Main Unit	3.3 kg
		Subwoofer (PS-WH750, PS-WH751)	9.8 kg
	Dimensions (W x H x D)	Main Unit	943 x 123 x 57 mm
		Subwoofer (PS-WH750, PS-WH751)	305.5 x 388.5 x 305.5 mm
	Operating Temperature Range		+5 °C to +35 °C
	Operating Humidity Range		10 % to 75 %
AMPLIFIER	Rated Output Power	Main Front	40W/CH, 6 OHM, THD = 1%, 1kHz
		Main Bottom	40W/CH, 6 OHM, THD = 1%, 1kHz
		Subwoofer (PS-WH750, PS-WH751)	160W, 3 OHM, THD = 10%, 100Hz
	S/N Ratio (Analogue Input)		65 dB
	Separation (1kHz)		65 dB

* S/N ratio, distortion, separation, and usable sensitivity are based on measurements using AES (Audio Engineering Society) guidelines.

* Nominal specification

- Samsung Electronics Co., Ltd reserves the right to change the specifications without notice.
- Weight and dimensions are approximate.
- For the power supply and Power Consumption, refer to the label attached to the product.

※ Open Source License Notice

For further information on Open Sources used in this product, please visit the website:
<http://opensource.samsung.com>



Hereby, Samsung Electronics, declares that this Wireless Audio - Soundbar is in compliance with the essential requirements and other relevant provisions of Directive 1999/5/EC.

The official Declaration of Conformity may be found at <http://www.samsung.com>,

go to Support > Search Product Support and enter the model name.

This equipment may be operated in all EU countries.

Contact SAMSUNG WORLD WIDE

If you have any questions or comments relating to Samsung products, please contact the SAMSUNG customer care Centre.

Country	Contact Centre ☎	Web Site
AUSTRIA	0800 - SAMSUNG (0800 - 7267864)	www.samsung.com/at/support
BELGIUM	02-201-24-18	www.samsung.com/be/support (Dutch) www.samsung.com/be_fr/support (French)
BOSNIA	051 331 999	www.samsung.com/support
BULGARIA	07001 33 11 , sharing cost	www.samsung.com/bg/support
CROATIA	062 726 786	www.samsung.com/hr/support
CZECH	800 - SAMSUNG (800-726786)	www.samsung.com/cz/support
DENMARK	70 70 19 70	www.samsung.com/dk/support
FINLAND	030-6227 515	www.samsung.com/fi/support
FRANCE	01 48 63 00 00	www.samsung.com/fr/support
GERMANY	0180 6 SAMSUNG bzw. 0180 6 7267864* (*0,20 €/Anruf aus dem dt. Festnetz, aus dem Mobilfunk max. 0,60 €/Anruf)	www.samsung.com/de/support
CYPRUS	8009 4000 only from landline, toll free	www.samsung.com/gr/support
GREECE	80111-SAMSUNG (80111 726 7864) only from land line (+30) 210 6897691 from mobile and land line	
HUNGARY	0680SAMSUNG (0680-726-786) 0680PREMIUM (0680-773-648)	http://www.samsung.com/hu/support
ITALIA	800-SAMSUNG (800.7267864)	www.samsung.com/it/support
LUXEMBURG	261 03 710	www.samsung.com/support

Country	Contact Centre ☎	Web Site
MONTENEGRO	020 405 888	www.samsung.com/support
SLOVENIA	080 697 267 090 726 786	www.samsung.com/si/support
NETHERLANDS	0900-SAMSUNG (0900-7267864) (€ 0,10/Min)	www.samsung.com/nl/support
NORWAY	815 56480	www.samsung.com/no/support
POLAND	0 801-172-678* lub +48 22 607-93-33 ** * (całkowity koszt połączenia jak za 1 impuls według taryfy operatora ** (koszt połączenia według taryfy operatora)	www.samsung.com/pl/support
PORTUGAL	808 20 7267	www.samsung.com/pt/support
ROMANIA	08008 SAMSUNG (08008 726 7864) TOLL FREE No.	www.samsung.com/ro/support
SERBIA	011 321 6899	www.samsung.com/rs/support
SLOVAKIA	0800 - SAMSUNG(0800-726 786)	www.samsung.com/sk/support
SPAIN	0034902172678	www.samsung.com/es/support
SWEDEN	0771 726 7864 (SAMSUNG)	www.samsung.com/se/support www.samsung.com/ch/support (German)
SWITZERLAND	0848 726 78 64 (0848-SAMSUNG)	www.samsung.com/ch_fr/support (French)
U.K	0330 SAMSUNG (7267864)	www.samsung.com/uk/support
EIRE	0818 717100	www.samsung.com/ie/support
LITHUANIA	8-800-77777	www.samsung.com/lt/support
LATVIA	8000-7267	www.samsung.com/lv/support
ESTONIA	800-7267	www.samsung.com/ee/support



[Correct disposal of batteries in this product]

(Applicable in countries with separate collection systems)

This marking on the battery, manual or packaging indicates that the batteries in this product should not be disposed of with other household waste at the end of their working life. Where marked, the chemical symbols Hg, Cd or Pb indicate that the battery contains mercury, cadmium or lead above the reference levels in EC Directive 2006/66.

If batteries are not properly disposed of, these substances can cause harm to human health or the environment.

To protect natural resources and to promote material reuse, please separate batteries from other types of waste and recycle them through your local, free battery return system.



Correct Disposal of This Product
(Waste Electrical & Electronic Equipment)

(Applicable in countries with separate collection systems)

This marking on the product, accessories or literature indicates that the product and its electronic accessories (e.g. charger, headset, USB cable) should not be disposed of with other household waste at the end of their working life. To prevent possible harm to the environment or human health from uncontrolled waste disposal, please separate these items from other types of waste and recycle them responsibly to promote the sustainable reuse of material resources.

Household users should contact either the retailer where they purchased this product, or their local government office, for details of where and how they can take these items for environmentally safe recycling.

Business users should contact their supplier and check the terms and conditions of the purchase contract. This product and its electronic accessories should not be mixed with other commercial wastes for disposal.